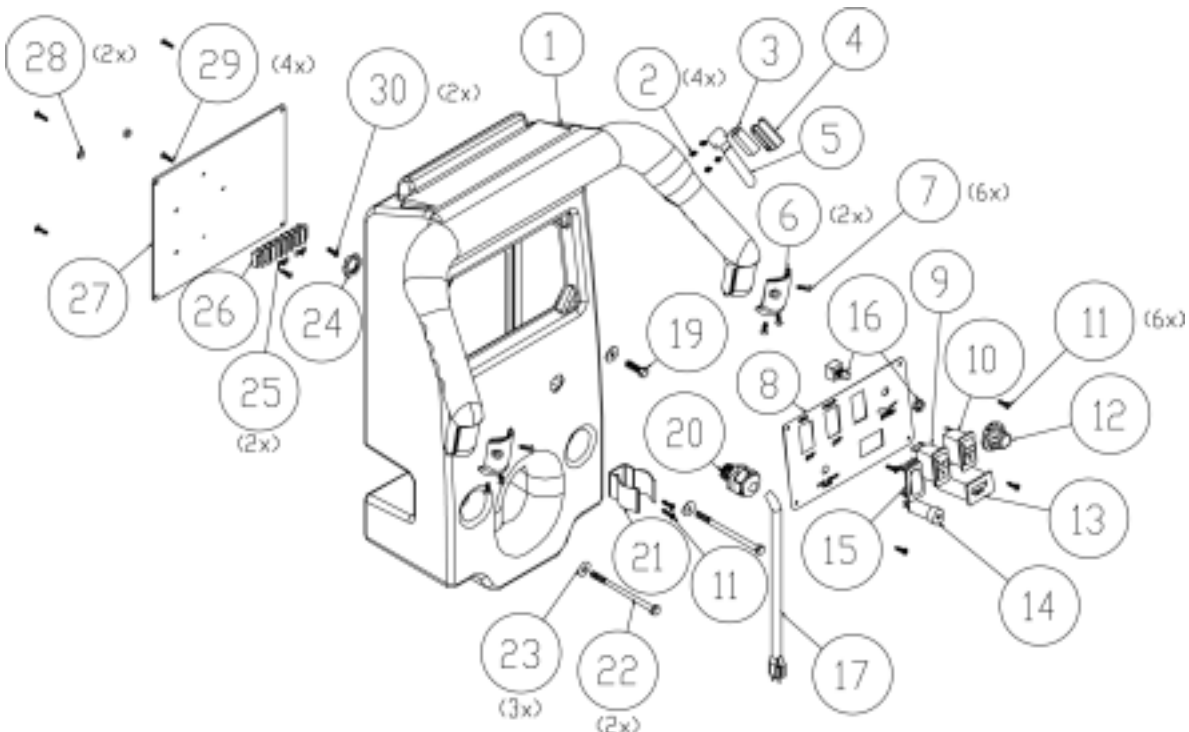
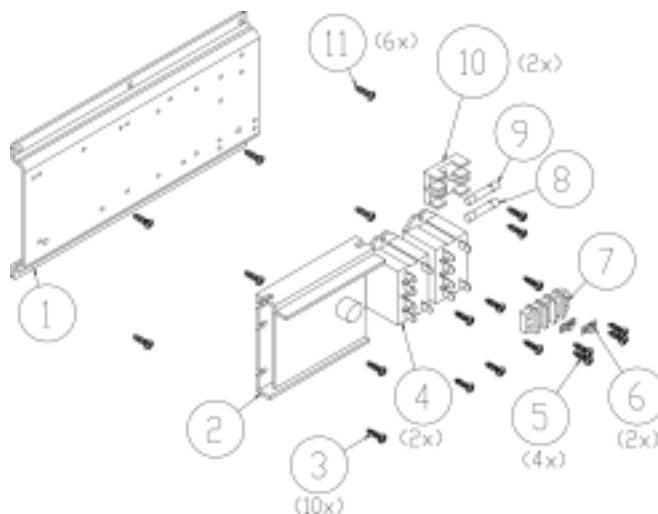


Handle Assembly



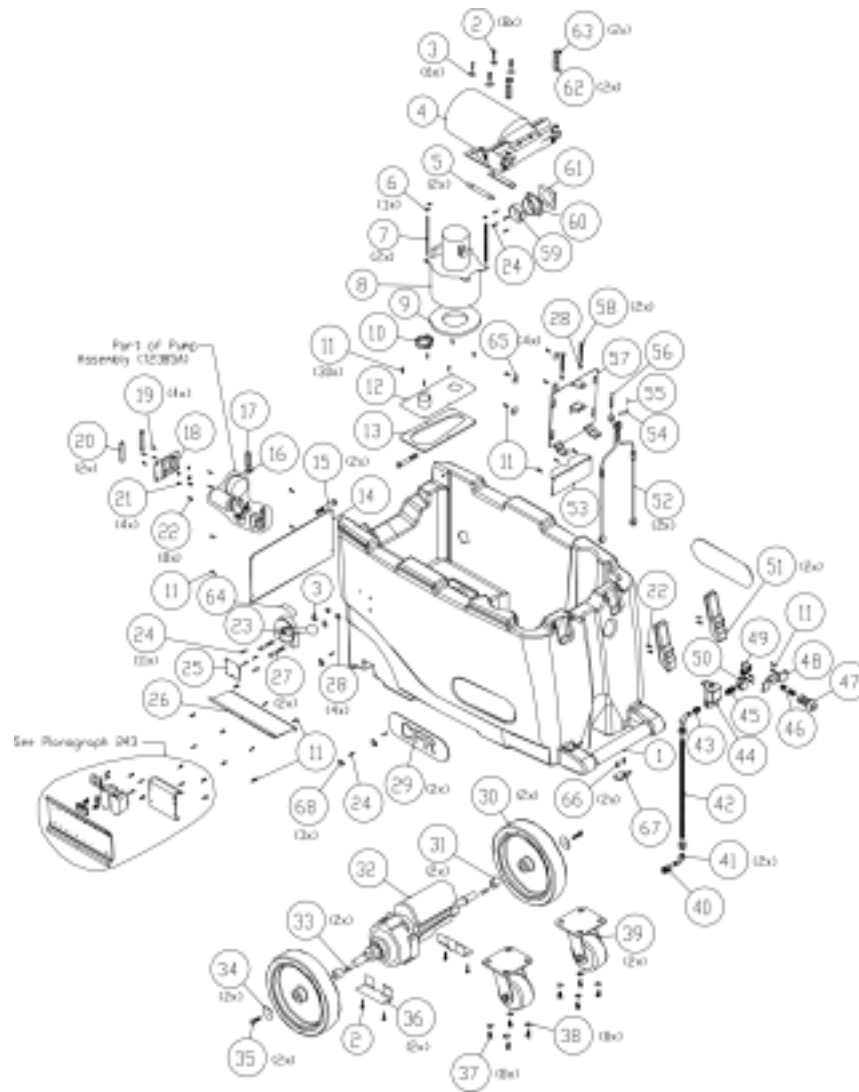
Ref #	Part #	Description	Ref #	Part #	Description	Ref #	Part #	Description
01	72505A	Handle, Paramount	11	72387A	Screw, #8 x 5/8 Phil PH	22	72570A	Screw, Long, Hex Head
02	X8261	Screw, #6 Phil Pan, P20SP	12	72579A	Knob, Speed Control, P20SP	23	X8235	Washer, Flat USS Zinc
03	72008A	Micro Switch, P20SP		X8151C	Plug, 3/8" Hole, Plastic,	24	X8008N	Nut, Lock, Steel Conduit
04	72382A	Bracket, Finger Switch, P20SP	13	72411A	Hour Meter, AC	25	72434A	Jumper Tab #6, P20SP
05	72398A	Handle, Finger Switch, P20SP	14	7FC007	Circuit Breaker, 5A	26	72432A	Terminal Block, 7 Positions, P20SP
06	72510A	Handle Glide	15	72116A	Switch Cover, Blank		72433A	Terminal Block, 7 Positions
07	72056A	Screw, #8 x 5/8"	16	72566A	Motor Control, 125VDC	27	72361A	Panel, Motor Control
08	72574A	Switch Panel, P-20	17	PX112	Pigtail, Black 12/3 SJT x 39"	28	X8256	Nut, 8-32 Keps Zinc
09	70895A	Rocket, Switch, 15A, 4 Pole, P20SP	19	X8282	Bolt, Hex SS	29	72052A	Screw, #8 x 5/8, Phil Pan TS
10	70050B	Rocker, Switch, 15A, 2-Pole	20	PD8	Strain Relief NPT	30	7BS002	Screw, Phil Pan
			21	72173A	Clip, Hand-Holding Spring			

Component Panel Assembly



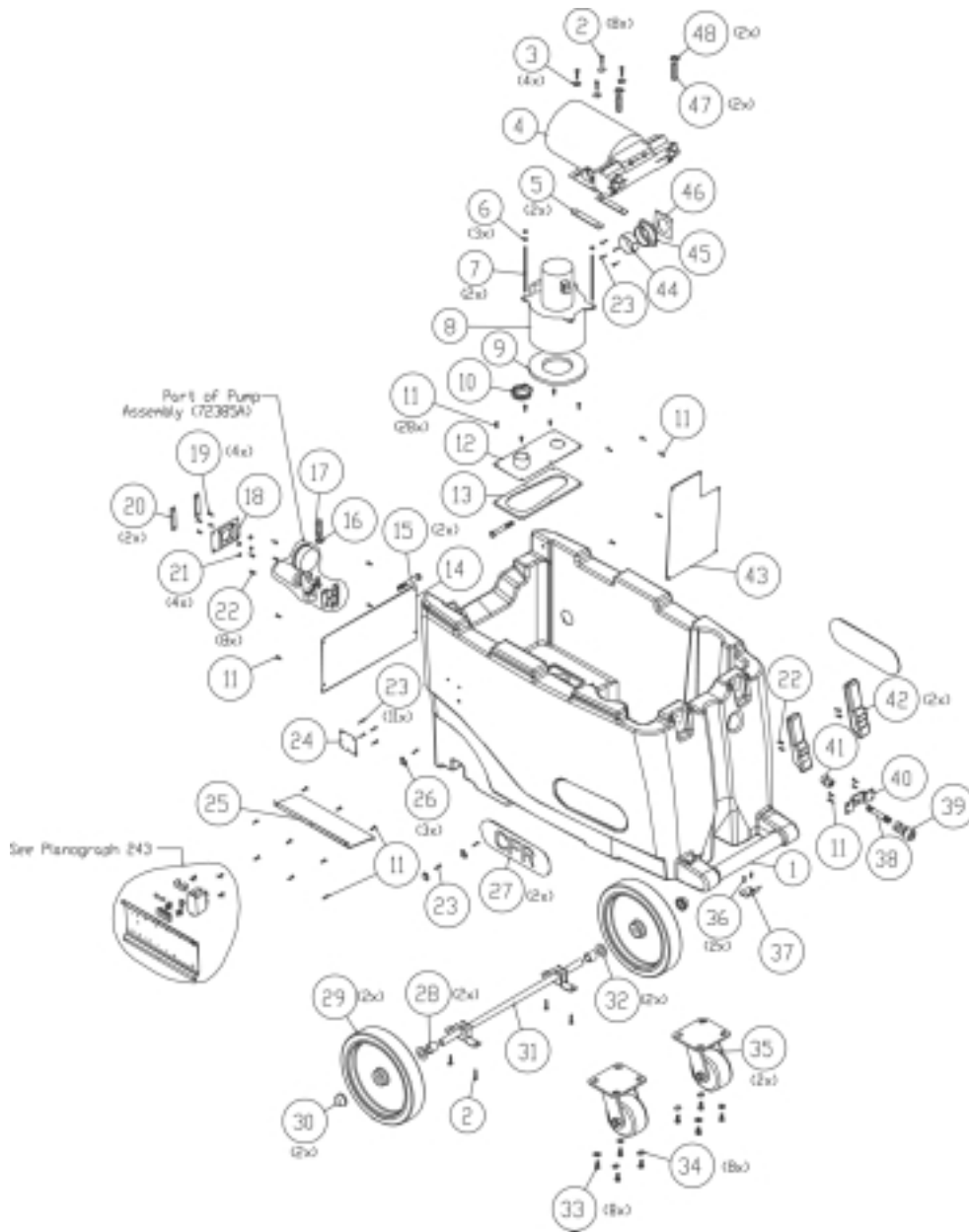
Ref #	Part #	Description	Ref #	Part #	Description	Ref #	Part #	Description
01	72438B	Component Bracket	05	72387A	Screw, #8 x 5/8", Phil Tap Pan, Black	08	72428A	Fuse, 20A / 32V, P20SP
02	72566A	Motor Control, 125VDC	06	72434A	Jumper, Tab #6	09	72429A	Fuse, 12A / 32V
03	72052A	Screw, #8 X 5/8 Phil Pan TS	07	72433A	Terminal Block 3 Positions	10	72430A	Fuse Clip
04	71379A	Relay, 25A, 120V, P20SP				11	72388A	Screw, #10 x 5/8 Phil Tap Pan

Base Assembly P20SP



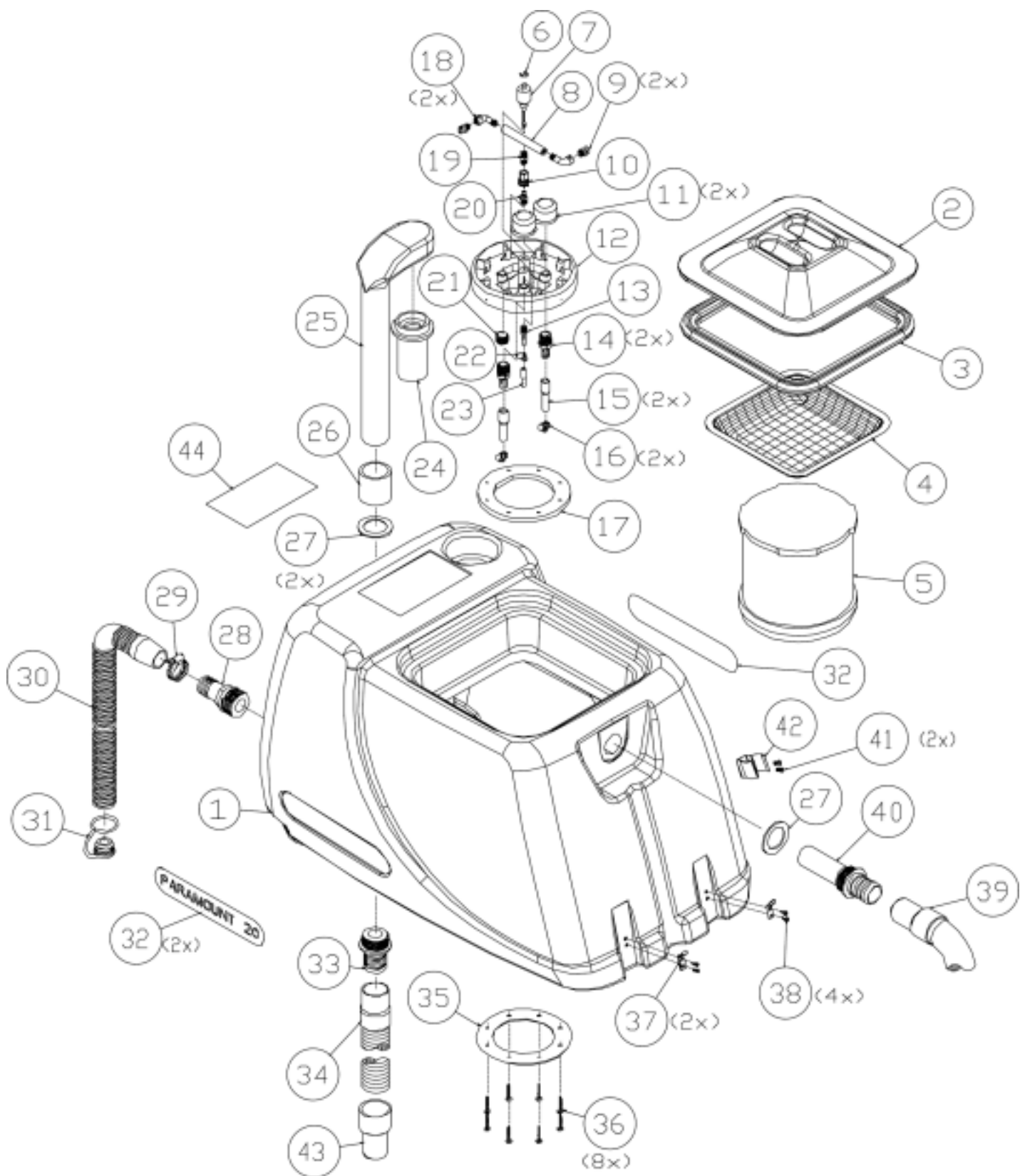
Ref #	Part #	Description	Ref #	Part #	Description	Ref #	Part #	Description
01	72504A	Base, Paramount 20	25	72499A	Plate, Hole Cover w/ cut-out	46	7AR013	Nipple, NPT x 3" L SS
02	72020A	Screw, Self Tap, PHMS Zinc	26	72567A	Cover, Relay Bracket	47	70063B	Coupler QD Valved "
03	X8235+	Washer, Flat USS Zinc	27	71313A	Screw, 20 x 2 Socket Cap	48	72539A	Bracket, Quick Disconnect
04	72385A	Pump Assembly	28	7BF004	Nut, Kep 20 Zinc	49	7AE003	Elbow, W/treet NPT
05	7GF033	Pad, Motor Mount	29	72559A	Label, Base (CFR)	50	7AV001	Tee Union NPT
06	7BF003	Nut, Kep #10-24 Zinc	30	72511A	Wheel, 10" Diameter	51	72390A	Latch, Soft
07	72000A	Rod, All Threaded 3/16 x 5-1/2	31	72571A	Bushing, 7/8" Long, Transaxle	52	72404A	Cable Short, Tool head
08	72365A	Vacuum Motor, 3 Stage 120V	32	72586A	Transaxle / Motor, 90V, .18HP	53	72502A	Support Bracket, Tool Lifting
09	70020B	Gasket, Vacuum Motor Seal	33	72453A	Key, Machine 3/16" Square x 1"	54	72406A	Pin Clevis, Tool head Cable
10	7DL005	Hose Clamp, 1-1/2" SS	34	72422A	Flat Washer, .325 x 1.53 x .08	55	72467A	Cotter Pin, 1/16" LG
11	72388A	Screw, #10 x 5/8 Phil Tap Pan	35	72602A	Screw, 5/16-24 x 7/8" L Hex SS	56	72405A	Cable, Long
12	72538A	Panel, Vacuum Motor	36	72338C	Plate, Transaxle Mounting	57	72403B	Lifting Plate, Adjustable
13	72540A	Gasket, Vacuum P-20	37	7DT001	Bolt, 5/16-18 x 5/8" Hex Tap Zinc	58	71639A	Bolt, 20 x 2-1/2 Hex Tap 18-8 SS
14	72535A	Transaxle Cover Plate	38	X8218+	Washer, 5/16 SAE Flat	59	72436A	Gasket, VAC Exhaust
15	72379A	Screw, 3/8-16 x 2-3/4 Hex Head	39	72551A	Caster, 4" x 2" Wheel, 4-1/2" x 4" Plate	60	7GR032	Adaptor Flanged 2" White PVC
16	7DL003	Clamp Hose	40	70100A	Coupler, QD 1/8F	61	7GF006	Gasket, Flanged Short Elbow
17	71817A	Hose, Braided, 29" Long	41	SW139	Elbow, 1/8 Street, 90 degree	62	70079C	Hose, wire reinforced, 44" Long
18	72372A	Panel, Mounting Regulator	42	71366A	Hose, Teflon, 1/8" x 1/8" x 24"	63	7DL008	Clamp Hose, SS
19	7BS002	Screw, 8-32 x .5 Phil Pan SS	43	7AG002	Bushing, 1/8 NPT	64	72495A	Label, Paramount Tool
20	72369A	Pad, Mounting Regulator	44	71492A	Solenoid, 1/8 Orifice	65	X8235A+	Washer, 1" OD, Flat
21	X8256+	Nut, 8-32 Keps Zinc	45	7CX002	Nipple, Hex MPT	66	72590A	Screw, #8 x 5/8" Oval Head, Self-Tapping, Black
22	72052A	Screw, #8 X 5/8 Phil Pan TS				67	72568A	Wand Holder
23	72561A	Lever, Straight (Magura Handle)				68	SW158+	Cable Clamp
24	7CW002	Screw, #6 Phil Pan TS						

Base Assembly P20



Ref #	Part #	Description	Ref #	Part #	Description	Ref #	Part #	Description
01	72504A	Base, Paramount 20	17	71817A	Hose, Braided, 29" Long	35	72551A	Caster, 4" x 2" Wheel, 4-1/2" x 4" Plate
02	72020A	Screw, Self Tap, PHMS Zinc	18	72372A	Panel, Mounting Regulator	36	72590A	Screw, #8 x 5/8" Oval Head, Self-Tapping, Black
03	X8235+	Washer, Flat USS Zinc	19	7BS002	Screw, 8-32 Phil Pan SS	37	72568A	Wand Holder
04	72385A	Pump Assembly	20	72369A	Pad, Mounting Regulator	38	7AR013	Nipple, NPT x 3" L SS
05	7GF033	Pad, Motor Mount	21	X8256+	Nut, 8-32 Keps Zinc	39	70063B	Coupler QD Valved "
06	7BF003	Nut, Kep #10-24 Zinc	22	72052A	Screw, #8 X 5/8 Phil Pan TS	40	72539A	Bracket, Quick Disconnect
07	72000A	Rod, All Threaded 3/16 x 5-1/2	23	7CW002	Screw, #6 Phil Pan TS	41	PC38+	Coupling, Double Thread Female
08	72365A	Vacuum Motor, 3 Stage 120V	24	72499A	Plate, Hole Cover w/ cut-out	42	72390A	Latch, Soft
09	70020B	Gasket, Vacuum Motor Seal	25	72567A	Cover, Relay Bracket	43	72595A	Cover Plate, Lift Mechanism
10	7DL005	Hose Clamp, 1-1/2" SS	26	SW158+	Cable Clamp	44	72436A	Gasket, VAC Exhaust
11	72388A	Screw, #10 x 5/8 Phil Tap Pan	27	72559A	Label, Base (CFR)	45	7GR032	Adaptor Flanged 2" White PVC
12	72538A	Panel, Vacuum Motor	28	72592A	Bushing, 7/8"	46	7GF006	Gasket, Flanged Short Elbow
13	72540A	Gasket, Vacuum	29	72580A	Wheel, 10" Diameter, Gray Tire, 5/8" Bore	47	70079C	Hose, wire reinforced, 44" Long
14	72535A	Transaxle Cover Plate	30	72597A	Push Nut, 5/8" Plastic, Black	48	7DL008	Clamp Hose
15	72379A	Screw, 3/8-16 x 2-3/4 Hex Head	31	72587A	Axle, Paramount 20			
16	7DL003	Clamp Hose	32	71520A	Washer, 5/8" SAE, Flat Zinc			
			33	7DT001	Bolt, 5/16-18 x 5/8" Hex Tap Zinc			
			34	X8218+	Washer, 5/16 SAE Flat			

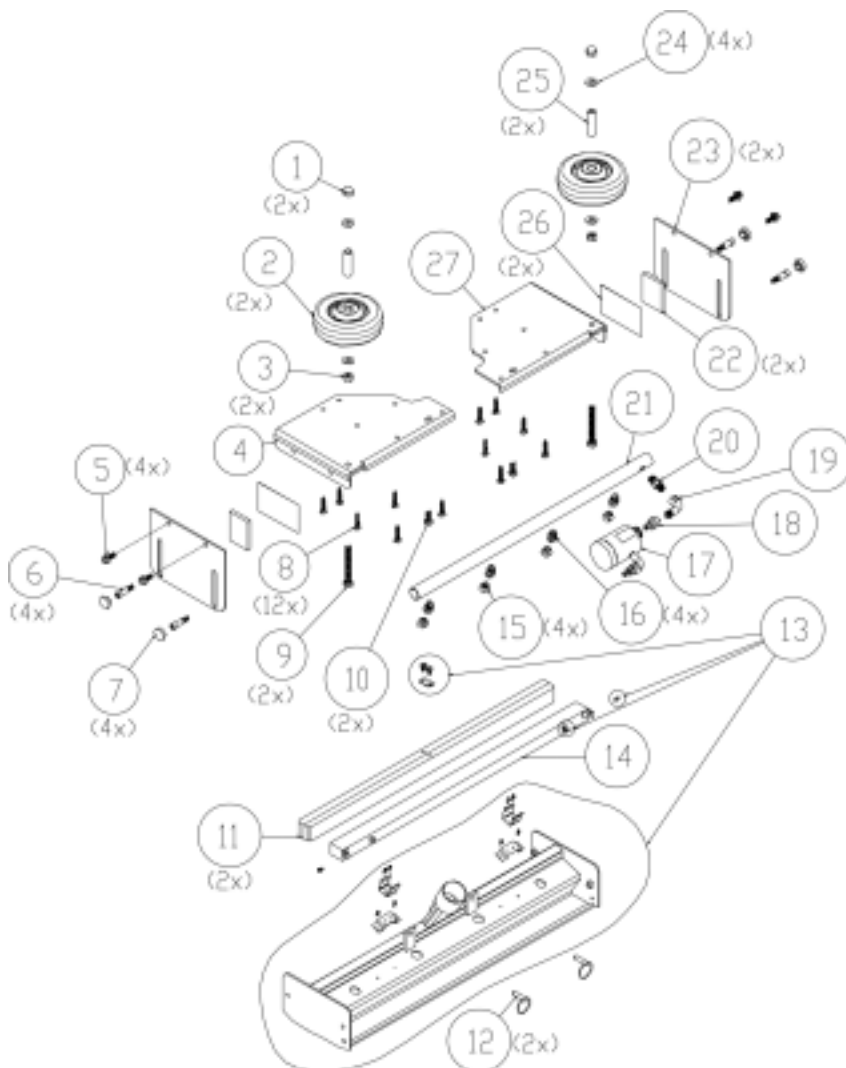
Tank Assembly



Tank Assembly

Ref #	Part #	Description	Ref #	Part #	Description	Ref #	Part #	Description
01	72503A	Tank, Paramount 20	18	SW139+	Elbow, 1/8 Street (90 degree)	33	PX25	Fitting, Plastic, 1 NPT x 1 Hose Barb
02	72321A	Lid, Tank	19	7CX001	Nipple Hex 1/8	34	72384A	Hose, VAC Toolhead, 45" cut in half
03	72323B	Gasket, Lid 43"	20	71576A	Nipple QD 1/8 M SS	35	71920A	Ring Washer
04	72326A	Filter, Inlet	21	7AF003	Plug, Counter Hex	36	71644A	Screw, #10 Phil Pan TS
05	72224A	Filter, Main	22	7DL003	Hose Clamp,	37	72390A	Latch, Soft (Keeper)
06	71553A	E-Ring, Float Switch 70143A	23	71817A	Hose, Braided	38	7DM004	Screw, 8-32 x 3/8 PHMS SS
07	70343A	Switch Float 2 Pole	24	PX31	Float Cage w/ Heavy Ball	39	72384B	Hose, toolhead, P20SP
08	71485A	Header Backflush Nozzle	25	PX33	Vacuum Tube	40	72409A	Inlet Fitting, P20SP
09	7DE016	Nozzle H 1/8 VV CH SS 11001	26	PX63	Coupler, Plastic, 1 Slip	41	71651A	Screw, 10-32 Phil Pan 18-8 SS
10	70100A	Coupler QD 1/8F	27	PX14A	Dump Valve Gasket	42	72173A	Spring Clip, Black Vinyl Coated
11	71495A	Pump Protection Filter	28	72476A	Fitting, Nylon Hose Barb, 1-1/4" ID, 1-1/4" NPT	43	72371A	Cuff for 72384A hose, 1-1/2" Black
12	72317A	Filter Mount	29	7DL005	Clamp Worm Gear 1-1/2 SS	44	72575A	Label, Instruction P20SP w/ Cleaning Tool
13	PC66	Fitting, Brass 1/8 NPTM Hose Barb	30	PAS37+	Drain Hose			
14	PC25+	Male/Male Barb	31	PAS36+	Expansion Plug Drain			
15	70079C	Hose, Wire Reinforced	32	72543A	Label, Tank (Paramount 20)			
16	7DL008	Hose Clamp, SS						
17	71897A	Gasket, Filter Mount						

Tool Head Assembly



Ref #	Part #	Description
01	72148A	Nut, Cap 5/16-18 ZP
02	X8025	Wheel, Black
03	7BF005	Nut, Keps 5/16-18 Zinc
04	72534A	Tool Head Bracket, Right,
05	72394A	Screw, 20 x 5/8, Hex Self-Locking Flange
06	72487A	Shoulder Screw, Tool head
07	72491A	Knob, Knurled Black, 3/4OD, 5/16 Th
08	72020A	Screw, Self-tap PHMS Zinc
09	72019A	Bolt, 5/16-18 Hex Tap Zinc
10	7DT002	Bolt, 20 x 5/8 Hex Tap Zinc
11	72556A	Weight Bar #2, 20"
12	72484A	Pin, Quick Release, Toolhead Cable Attachment
13	72506A	Tool Head, 20"
14	72555A	Weight Bar #1, 20"
15	72489A	Stainless Steel Spray Tip
16	72488A	Brass Nozzle Body
17	60400B	Inline Strainer Assembly
18	70101A	Nipple, QD 1/8-1/8 M Brass
19	SW139	1/8 Street Elbow, 90 Degree
20	72413A	Valve, Check
21	72557A	Header, Paramount 20
22	72437A	Pad, Tool Head
23	72541A	Tool Head Bracket Sides
24	X8218	Washer, 5/16 SAE, Flat Zinc
25	72486A	Spacer, Toolhead Wheel
26	72485A	Tape, Toolhead Pad
27	72533A	Tool Head Bracket Left